



**EPZ** PHARMA  
PRODUCTS

STEER is a pioneer and global provider of EPZ parts for Pharmaceutical Hot Melt Extruders (HMEs). STEER's EPZ Pharma parts include screw elements, shafts, dies, and barrels. STEER's EPZ Pharm parts are available for STEER manufactured HME's, as well as HME's manufactured by others (OEMs)



## STEER offers Barrel & Clamshell replacements

STEER is the only supplier to the industry to offer all extruders in both clam shell and segmented barrel configurations.



**CLAM SHELL**



**SEGMENTED BARREL – JIFFY CLAMP**

Available metallurgies for the parts; X15TN, 316 SS, 316L SS, 440 SS  
All pharma parts are provided with Material Certificates



# STEER Shafts & Die plates for all OEMs



STEER shafts are made with superior metallurgy from our very own state-of-the-art foundry, with full-fledged in-house treatment. At STEER, we have the ability to machine any contour for up to 5.5m. Our in-house torque testing facility helps rate the capacity of these shafts.



Configurable Die plates

**EPZ Pharma Parts (Standard) - Available for STEER HMEs & OEM HMEs**

Available metallurgies for the parts; X15TN, 316 SS, 316L SS, 440 SS

All pharma parts are provided with Material Certificates

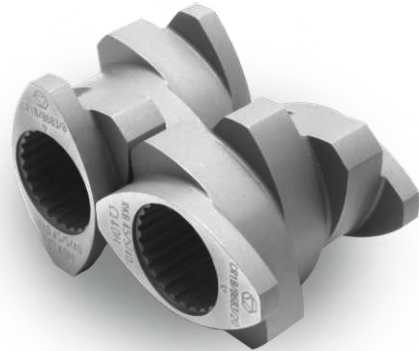
# STEER Standard Elements for all OEMs

**EPZ**PHARMA  
PRODUCTS

INTAKE ZONE ELEMENTS



MELTING ZONE ELEMENTS



VENTING ZONE ELEMENTS



MIXING ZONE ELEMENTS



**EPZ Pharma Parts (Standard) - Available for STEER HMEs & OEM HMEs**

Available metallurgies for the parts; X15TN, 316 SS, 316L SS, 440 SS

All pharma parts are provided with Material Certificates

**HIGHER INTAKE**  
STEER SFV ELEMENTS



**HIGHER INTAKE (SPECIAL)**  
STEER RFV ELEMENTS



**ENHANCED MIXING**  
STEER FKB ELEMENTS



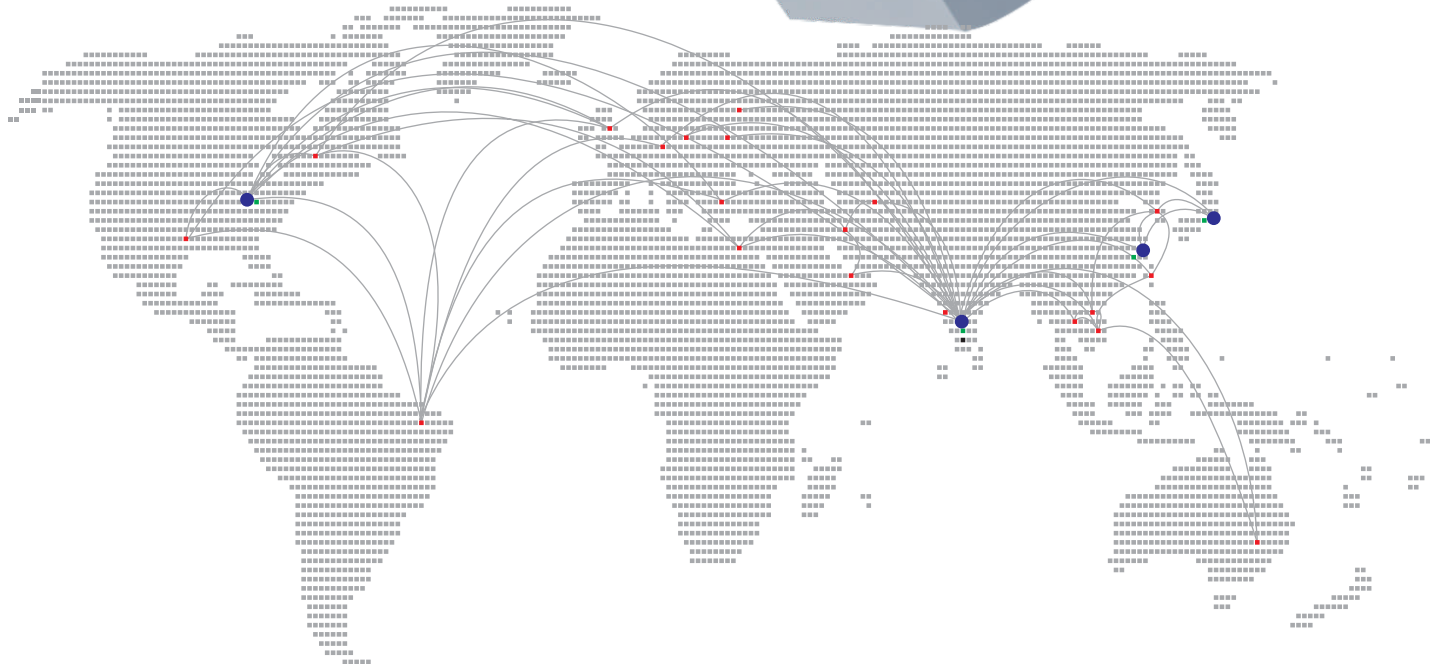
**EFFICIENT MELTING**  
STEER FME ELEMENTS



**EPZ Pharma Elements (Special) - Only available for STEER HME's**

Available metallurgies for the parts; X15TN, 316 SS, 316L SS, 440 SS

All pharma parts are provided with Material Certificates



## OUR GLOBAL CONTACTS



### AMERICAS

Samer Habash  
samer.habash@steerlife.com  
Mob: +1 (704) 641-4225  
Tel: +1-302-697-2566



### INDIA

Vijay Kulkarni  
vijay.kulkarni@steerlife.com  
Mob: +91 990-004-4226  
Tel: +91-80-42723300



### JAPAN

Akihiko Sato  
a-sato@steerjapan.com  
Tel: +81 90-6539-9994



### CHINA

ROY Dipankar  
roy.dipankar@steerworld.com  
Mob: + 852-9465-9958